

Incubator workspace:

- 2,740m² of flexible incubator floorspace for small and start-up businesses provided to date



Total business floorspace:

71,028m²

of total commercial floorspace built



Economic

Innovation:

- Innovation in the demolition of reinforced aircraft hangars reduced time spent on each hanger from 23 to four days
- Significant disruption and capital costs saved through early engagement with Anglian Water to route pipework away from public highway



Contractor procurement:

- 100% of directly procured contracts over £1 million from within a 25-mile radius
- We have three contractor frameworks and six consultancy frameworks



Affordable homes:

- Minimum of 12% within Key Phase 1 with a viability review providing increases per phase to policy of 35%

Job creation:

- EDGE – Jobs and Skills:
 - 774 people provided with Information, Advice and Guidance (IAG) since EDGE started with 267 placed into employment
 - EDGE has held six career fairs to date, with c.500 students visiting per fair
 - EDGE carries out ten school engagement events per year, in addition to the career fairs
- EDGE Construction and Skills Centre:
 - 775 hours of training provided via the Construction and Skills Centre
 - 136 learners are employment ready and are actively job seeking
 - 16 learners successfully employed
 - Five housebuilder partners engaged with the jobs and skills programme (Redrow, Breheny, Morris, RG Carter and Crest Nicholson)

S106:

- £10.8 million committed through S106 for education and transport facilities in 2019

Staff engagement:

- 420 hours' employee time supporting community programmes in 2019
- 100% of on-site staff volunteering time for local community groups



Community events:

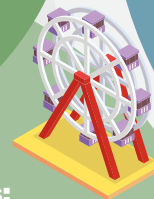
- Three major events in 2019
 - Big Summer Bash, Christmas Carols and Outdoor Cinema
- Weekly community activities supported through provision of space
- Extensive planning consultation events for outline and Key Phase applications



Social

Community beneficiaries:

- Seven advisory groups, school boards, networks and trusts supported including Fusion, Groundwork, Huntingdon BID, iMET, Ermine Street Church Academy, Natural Cambridgeshire and Cambridge Ahead
- 18 community groups sponsored within a 25-mile radius
- 14 community groups supported for over three years



Trees for life:

- Within Key Phase 1 there will be c.51,000 trees from over 87 different species:
 - providing a tree canopy cover of 33%; this compares to the average canopy cover across the UK at 17%;
 - storing over 170 tonnes of carbon each year;
 - removing a total of 1.24 tonnes of airborne pollutants each year;
 - creating total leaf area of 74.5ha;
 - reducing runoff by an estimated 1,630m³ a year; and
 - with a total replacement cost, on a like-for-like basis, of £4.77 million

51,000+

trees will store over 170 tonnes of carbon each year



Natural

Energy

- Average energy performance certificate for five commercial buildings delivered by Urban&Civic is 25 (A Rating)
- 139.4 tonnes of CO₂e produced from the new buildings operated by Urban&Civic



Biodiversity net gain:

- When completed Key Phase 1 is predicted to achieve a 3.7% net gain in biodiversity value



Water use:

- All homes are designed with water saving fixtures to help residents only use 110 litres of water per person per day; this exceeds building regulations of 125 litres; per person per day

Materials:

- 31% of new grey infrastructure by tonnage is from material recycled on site
- 86% of new green infrastructure by tonnage is from material recycled on site



Public open space:

- 100% of our green infrastructure has five-year management plans for both ecology and landscaping

Priority species:

- The design of landscaping and ecology corridors protects multiple priority species of birds, bats and bees



Sustainability in action: Alconbury Weald Key Phase 1

The **PLANNING AWARDS 2019**
Celebrating excellence in planning and placemaking

Design:

- Winner of the Mixed Use Development of the Year – Planning Awards 2019

Public space:

- 49.6% of Key Phase 1 is public open space
- c.261m² of public open space per resident
- 100% of homes are no more than 69m from a green corridor
- 100% of homes are no more than 147m from a play area

Renewable energy:

- Housebuilders are required to provide a minimum of 10% of the energy for their homes from sustainable or renewable sources
- Solar panels on the roof of all commercial buildings, providing 37,408kWh of electricity per year, saving approximately 19,786kg of carbon per year

Land remediation:

89ha

- of land returned to usable development platform to date; this is equivalent to the size of 108 football pitches
- 489,000 tonnes of concrete taxiways excavated, processed and reused on site and 445,000 cubic metres of material remediated to date



Physical

Education facilities:

- Ermine Street Church Academy, opened September 2016 – 2FE (2,432m²) to date
- iMET Building, opened 2018 – 3,124m²

Bringing heritage to life:

- Grade II listed Second World War watchtower – fully refurbished and opened as a community facility and office opened in 2019 – 210m²

Sustainable transport:

- 12.8km of dedicated cycle routes provided to date
- All homes are within a five to six minute walk of a bus stop

Healthy eating:

- Ermine Street Church Academy allotments opened in November 2018
- 1727m² of permanent growing space provided across Key Phase 1
- 1590m² of orchards provided across Key Phase 1

Households:

- c.300 homes occupied



Human

Healthy lifestyles:

- Alconbury selected as a case study for Sport England's Active Design Principles
- In addition to footpaths, cycleways and exercise trails, the Club building houses an on-site gym

Health and safety:

- 91% of on-site employees have attended a health and safety briefing in the last six months
- 100% of the on-site project management team have attended a CDM course within the last 12 months
- 22% of on-site employees are trained fire wardens and 11% are trained first aiders
- There have been no RIDDORs on site since 2017
- Three safety meetings held per quarter

Mental health:

- Eight employees have completed mental health first aid training

Emergency support:

- 79% of dwellings are within 250 meters of an Automated External Defibrillator (AED)

